

THEOMETRICS

Bringing BIM to the Field

11 Hudson Square
497 Canal Street
New York, NY 10013

Phone: 212.627.8220
Fax: 212.691.9505

www.theometrics.com

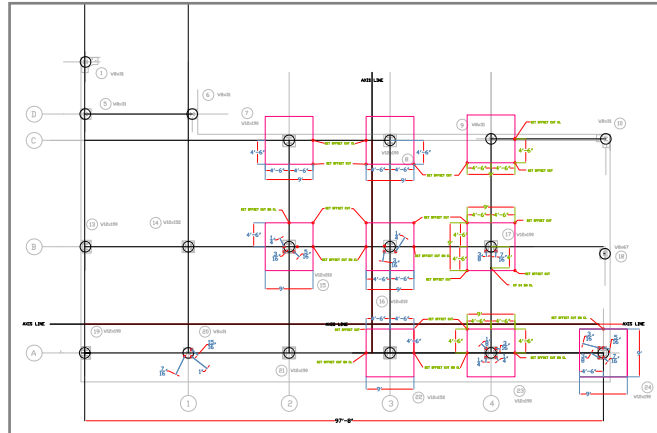
Customer

Pavarini McGovern
352 Park Avenue South
New York, NY 10016
Phone: 212.627.8220
www.pavarinimcgovern.com

Architect

Beyer Blinder Belle

PROJECT: 157 Chambers Street 3D Bolt Position Layout & Deviation Study

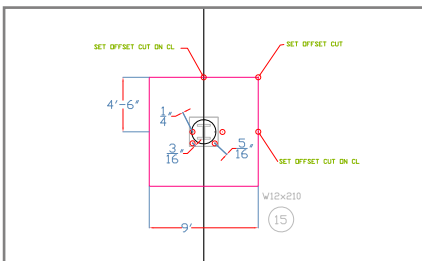
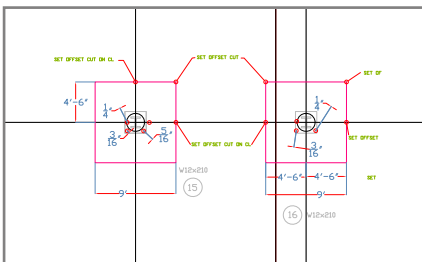


Project Overview

As part of a commercial renovation, several floors of the 157 Chamber Street building in lower Manhattan were reconditioned and two additional stories were added to the building.

Scope of Work

3D Bolt Position Layout & Deviation Study Theometrics' systems were employed to conduct a deviation study comparing planned bolt layout to actual bolt position and then, based on the study's findings, to create 3D Bolt Position Layout. On the day the TheoTech team was scheduled to calculate the deviation between the intended position and actual position of each fastener, an on-site demolition was in progress, leaving it possible to map only 60% of the bolts. The team navigated to each of the available bolts' positions directly from the CAD drawing and facilitated bolt placement with astounding accuracy, simplifying the fitting of steel I-beams to the bolts. Theometrics was not called back to map the additional bolts and as a result, precision was not achieved on the first attempt to place the remaining 40%; realigning the misplaced bolts and modifying the steel I-beams to fit the new bolt placements caused delays in construction and resulted in added cost and labor. As shown by this example, Theometrics is able to provide accuracy unattainable by tape measure and helps to avoid costly errors.



Theometrics

Theometrics is the art and science of precision measurement and navigation in and on construction sites. Our innovative technology navigates users with laser-sharp accuracy, from any point, on any CAD drawing or BIM model, to the exact specified field location. Theometrics' technology also enables exact, automated measurement and creation of real-time 2D or 3D CAD drawings in the field. Theometrics is the first and only company in the world to establish this Missing Bridge™ between CAD and the field: the transfer of CAD design precision to and from the construction site in real-time.